

January 20, 2023

Today, Friday, January 20<sup>th</sup>, is our last day of regular classes. Next week we will be concentrating on final exams all week and getting grades finalized!!! Students are only required to attend if they have an exam scheduled. **THE POWERSCHOOL APP WILL BE LOCKED FROM JAN. 20-27 TO ALLOW OUR TEACHERS TO FINALIZE GRADES.** It will be unlocked again on the 27<sup>th</sup> for you to review the first semester report card. If you would prefer a paper copy of the report card, please call the office and we will print one off. Jan 30 is the start of SEMESTER 2. For any schedule changes, please ask your student to bring those to their Success teacher.

**IT IS NOT TOO LATE TO REGISTER FOR Work Experience, RAP, or the Green Certificate, please see Mrs. McLeod for more information.**

**FREE BREAKFAST SANDWICHES from Reddi Mart are available EVERY Tuesday morning for our students. Mr. White prepares a breakfast the other days. Please encourage your student to come to the SGA and enjoy breakfast with friends before class. Breakfast is served from 8:30 am – 8:50 am.**

## **Student schedules are now available on PowerSchool 😊**

If you are having trouble viewing on the APP, you may need to delete the app and reinstall using the same username and password to gain this year's information. Any changes to schedule will be able to be done the first week at school.



### ***Parent Portal Access – Please!***

If you have not already signed up for your Parent Portal Account, please sign up to use the PowerSchool Parent Portal and have instant access to your child's assignment and test marks, attendance, report card history, and more! Sign up by clicking the waffle button (square button with 9 boxes inside) on the top right-hand side of the Peace River School Division website, or any of our school websites, and choose "PowerSchool Student and Parent Portal" <https://prsd.powerschool.com/public/>



### ***School Cash Accounts***

If there are any fees for your child, such as extra curricular, Yearbook, damaged or lost school textbooks, they will appear on your child's account. Please take the time to set up your School Cash account and make any outstanding fee payments. You will find the easy sign-up on the Peace River School Division's website, the waffle buttons on the upper right-hand corner and selecting School Cash Online Payments. This will also be used to order hot lunches once the program has been organized (possibly by early October).

## Final Exam Schedule for Jan 2023 - Peace River High School

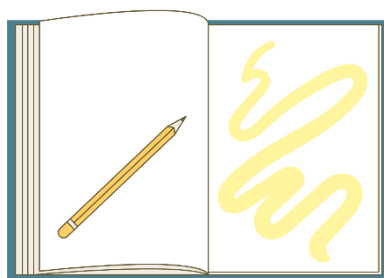
**Last Day of Classes - FRI, JAN 20**

### **Last week of Class - Final Exams Part A/Diploma Exams**

| Date         | Course                  | Time          | Room        | Teacher                 | VEP/OR                        |
|--------------|-------------------------|---------------|-------------|-------------------------|-------------------------------|
| Thu, Jan 12  | ELA 30-1 Part A Diploma | 9:00 - 12:00  | Library     | Dube/VEP                | 4 VEP Students/ 1 OR student  |
|              | ELA 30-2 Part A Diploma | 9:00 - 12:00  | Library     | Plaizier                |                               |
| Fri, Jan 13  | SS 30-1 Part A Diploma  | 9:00 - 12:00  | Office      | -                       | 1 OR student                  |
|              | SS 30-2 Part A Diploma  | 9:00 - 11:30  | Library     | McLeod                  |                               |
| Mon, Jan 16  | FLA 30-1 Part A         | 9:00 - 12:00  | Office      | -                       |                               |
| Tues, Jan 17 | ELA 20-2 Part A         | Super C       | 204         | Sasseville              |                               |
| Super C      | ELA 20-1 Part A         | Super C       | 118         | Plaizier                |                               |
| Wed, Jan 18  | FLA 30-1 Part B         | 9:00 - 12:00  | Office      | -                       | 1 VEP ELA 10-1 Part A student |
| Thu, Jan 19  | Math 30-1               | 9:00 - 12:00  | Library     | Castelino               | 2 VEP students/ 1 VV student  |
| Super D      | Math 30-2               | 9:00 - 12:00  | Library     | -                       |                               |
|              | SS 20-1 Major essay     | success and B | 202/205     | McLeod                  |                               |
|              | ELA 10-1/10-2 Part A    | Super D       | 202/220/204 | Bourassa/<br>Sasseville |                               |
| Fri, Jan 20  | ELA 30-1 Part B Diploma | 9:00 - 12:00  | Library     | Dube                    | 1 VEP Math 10 Prep student    |
|              | ELA 30-2 Part B Diploma | 9:00 - 12:00  | Library     | Plaizier                |                               |
|              | FLA 9 Part A PAT        | 9:00 - 11:00  | 117         | Deo                     |                               |
|              | SS 20-1 Minor essay     | B block       | 202/205     | McLeod                  |                               |

**CALM - Interviews as scheduled in class**

**Exam Conflicts: Please talk to the office for rescheduling of exams**



## Final Exam Week Jan 23-27

| Date                | Course                 | Time         | Room        | Teacher                 | VEP/OR                  |
|---------------------|------------------------|--------------|-------------|-------------------------|-------------------------|
| <b>Mon, Jan 23</b>  | SS 30-1 Part A Diploma | 9:00 - 11:30 | Office      | -                       | 1 OR student            |
|                     | SS 30-2 Part A Diploma | 9:00 - 11:30 | Library     | McLeod                  | 1 VEP ELA 10-1 student  |
| <b>Block D</b>      | ELA 10-1               | 9:00 - 12:00 | 202/220     | Bourassa                |                         |
|                     | Bio 20                 | 9:00 - 12:00 | 217         | Sood                    |                         |
|                     | FLA 20                 | 9:00 - 12:00 | 117         | Deo                     |                         |
|                     | ELA 10-2               | 9:00 - 12:00 | 204         | Sasseville              |                         |
| <b>Tues, Jan 24</b> | Biology 30 Diploma     | 9:00 - 12:00 | Library     | Sood                    |                         |
| <b>Block C</b>      | FLA Part B PAT         | 9:00- 10:15  | 117         | Deo                     |                         |
|                     | Math 10 Prep           | 9:00 - 12:00 | 116         | Castelino               |                         |
|                     | Chem 20                | 9:00 - 12:00 | 215         | Pimm                    |                         |
|                     | ELA 20-1 Part B        | 9:00 - 12:00 | 118         | Plaizier                |                         |
|                     | ELA 20-2               | 9:00 - 12:00 | 204         | Sasseville              |                         |
| <b>Wed, Jan 25</b>  | Chemistry 30 Diploma   | 9:00 - 12:00 | Office      | -                       | 2 VEP students          |
|                     | Sci 9/K&E Sci PAT      | 9:00 - 10:15 | 202         | White                   |                         |
|                     | SS 9/K&E SS/ES PAT     | 9:00 - 10:20 | 220/117     | Bourassa/Deo            |                         |
| <b>Block B</b>      | Sci 10                 | 9:00 - 12:00 | 215/217     | Pimm/Sood               | 1 VEP Math 20-1 student |
|                     | SS 20-2                | 9:00 - 12:00 | 120         | Bauman                  |                         |
|                     | Sci 14                 | 9:00 - 12:00 | 203         | McIlroy                 |                         |
|                     | SS 20-1                | 9:00 - 12:00 | 202/library | McLeod                  |                         |
| <b>Thur, Jan 26</b> | Physics 30 Diploma     | 9:00 - 12:00 | office      | -                       |                         |
| <b>Block A</b>      | Physics 20             | 9:00 - 12:00 | 215         | Pimm                    |                         |
|                     | FLA 10                 | 9:00 - 12:00 | 117         | Deo                     |                         |
|                     | ELA 9 midterm          | 9:00 - 11:00 | 202/204/220 | Bourassa/<br>Sasseville |                         |
| <b>Fri, Jan 27</b>  | Science 30 Diploma     | 9:00 - 12:00 | 137         | -                       |                         |

# **ATTENTION PEACE RIVER HIGH SCHOOL**

## **Jasper Ski Trip 2023**

Thurs Mar 2nd - Sun Mar 5th

Cost: \$459 - Includes: hotel (lobstick lodge), Transportation (Bus), Lift Tickets (1 hr lesson included), taxes  
\*\* Rentals extra \$27/day  
See Mr. White to sign up and/or for more details

# **Pink Shirt Day Feb. 22, 2023**



**STAND  
UP  
AGAINST  
BULLYING**

**The Peace River School Division is taking a stand against bullying! If you would like to purchase a Pink Shirt, you will find the link soon in your school cash account. Various sizes are available. The shirts will be delivered to our school the week before.**

## A Note on SUCCESS



Students have SUCCESS classes that run from 10:12-10:59 each day. Each day has different options available.

Mondays are mandatory for all students to attend their homeroom teachers' class for either Health 9, Learning Strategies, or Grade 12 preparation courses.

Tuesday through Thursday, different options might be available to the students for tutoring or catch up, or their teachers might 'lock' them in for a mandatory class or for extra help. For those students that are all caught up, open rooms are available (sometimes even the gym!).

**However**, it is not a spare block. Students are expected to sign-in to a room or will be marked unexcused absent. This will mean an automated phone call at the end of the day unless the parent has called to excuse.

### Technology



Please return any Chromebooks or other technology that belongs to the school as soon as possible. They are locked and therefore useless to you at home.

Please remember that all Chromebooks need to be returned at the end of class, they should not be going home or stored in lockers.

**ALL CHROMEBOOKS WILL BE LOCKED FOR MAINTENANCE AFTER EXAMS ARE COMPLETED!**

## GRADUATION 2023



***The date for Grad 2023 has been set for Saturday, June 10th, 2023. This is a result of the parent survey that was sent home to families; 75% voted in favour of June 10th. The ceremony will commence at 1:00 pm in the gymnasium at Peace River High School***

***Please email a baby photo and a candid photo to Mrs. Knolauch for use in the slide show, as soon as possible (knoblalo@prsd.ab.ca)***

***Grad fee of \$120 has been added to school cash***

***Grad Photo Retakes are on Feb. 2. Please book through Lifetouch directly.***

***<http://www.prestigeportraits.ca/>***

***- Grad apparel will be available to order soon, through an online store set up through Caribou Cresting. Please watch your email for more information next week.***



**The Lifetouch Portal IS OPEN!! If you have any questions, please call Lifetouch 780-437-2431.**



**TEAM WEAR  
CORPORATE WEAR  
WORK WEAR/COVERALLS  
EMBROIDERY/SILKSCREENING  
EMPLOYEE GIFTS/PROMOTIONAL ITEMS**  
10101 - 100 AVE. PEACE RIVER, AB  
780-624-1686  
780-624-1686



## Peace River High School 2023 Graduation

PEACE RIVER HIGH SCHOOL 2023 GRAD HOODIES AND CREW NECKS

PRHS ONLINE STORE OPENS December 26, 2022 AT 9 AM AND WILL CLOSE

January 26, 2023 AT 11:59 PM.

ORDERS WILL BEGIN PROCESSING ONCE THE STORE IS CLOSED

NO ORDERS WILL BE TAKEN AFTER January 26, 2023

BECAUSE THIS IS A BULK ORDER, YOU CAN EXPECT YOUR GARMENT TO BE

DELIVERED APPROXIMATELY 3.5 - 4 WEEKS OF THE ONLINE STORE CLOSING

YOU WILL BE CONTACTED VIA PHONE OR EMAIL TO PICK YOUR ORDER UP AT

CARIBOU CRESTING LTD. IN PEACE RIVER

FOR ANY OTHER QUESTIONS PLEASE CALL CARIBOU CRESTING AT

780-624-1686

You can now purchase your items online in 3 easy steps:

1. Scan the QR code or go online to <https://cariboucresting.itemorder.com/> and enter sale code **6KZA2**
2. Choose your items and add them to your cart
3. Securely checkout with your credit card

Online Store Deadline: Thursday January 26th, 2023 (11:59pm CST)

|  |   |   |   |
|--|---|---|---|
| <p><b>Jerzees® Adult 8 Oz. NuBlend® Pullover Hooded Swea</b></p>  <p>9 Colors</p> <p><b>\$53.18</b></p> | <p><b>Jerzees Adult NuBlend Crewneck Sweatshirt</b></p>  <p>9 Colors</p> <p><b>\$46.76</b></p> | <p><b>Hoodies No Back Signature</b></p>  <p>9 Colors</p> <p><b>\$39.93</b></p> | <p><b>Crew Neck No Back Signatures</b></p>  <p>9 Colors</p> <p><b>\$32.87</b></p> |
|--|---|---|---|

Questions?  
Kimberly Rogers  
17806241686  
[kim@cariboucresting.com](mailto:kim@cariboucresting.com)  
<https://www.cariboucresting.com>

# PEACE REGION ADAPTIVE ASSOCIATION VIRTUAL PARA ICE HOCKEY INFORMATION MEETING



**WHEN:** FRIDAY, FEBRUARY 26  
**TIME:** 7:00 PM - 8:00 PM  
**CONTACT:** MELODY HILMAN 780-297-3225  
PEACEREGIONADAPTIVE@GMAIL.COM

Zoom Link



SCAN ME

## Have-A-Go Day

JOIN US FOR THIS FREE EVENT TO LEARN  
HOW TO PLAY PARA ICE HOCKEY! SLEDS  
WILL BE PROVIDED. PLEASE BRING YOUR  
OWN HELMETS AND GLOVES.

MARCH 13TH, 2:00 PM - 4:00 PM @ GRIMSHAW  
MILE ZERO REGIONAL MULTIPLEX

TO REGISTER PLEASE EMAIL  
PEACEREGIONADAPTIVE@GMAIL.COM



# PRAA

Peace Region Adaptive Association





**Also, please take this opportunity to register your phone to receive important messages via text using the attached instructions**



The Trusted Platform  
for School Community Engagement

## **Parents and Guardians**

### **You can take advantage of our Text Messaging Service**

Our school utilizes the SchoolMessenger system to deliver text messages, straight to your mobile phone with important information about events, school closings, safety alerts and more.\*

You can participate in this free service\* just by sending a text message of "Y" or "Yes" to our school's short code number, **724665**.

You can also opt out of these messages at any time by simply replying to one of our messages with "Stop".

SchoolMessenger is compliant with the Student Privacy Pledge™, so you can rest assured that your information is safe and will never be given or sold to anyone.



**Opt-In from  
your mobile  
phone now!**



**Just send  
"Y" or "Yes"  
to 724665**

**i** Information on SMS text messaging and Short Codes:

SMS stands for Short Message Service and is commonly referred to as a "text message". Most cell phones support this type of text messaging. Our notification provider, SchoolMessenger, uses a true SMS protocol developed by the telecommunications industry specifically for mass text messaging, referred to as "short code" texting. This method is fast, secure and highly reliable because it is strictly regulated by the wireless carriers and only allows access to approved providers. If you've ever sent a text vote for a TV show to a number like 46999, you have used short code texting.

\*Terms and Conditions – Message frequency varies. Standard message and data rates may apply. Reply HELP for help. Text STOP to cancel. Mobile carriers are not liable for delayed or undelivered messages. See [schoolmessenger.com/tm](http://schoolmessenger.com/tm) for more info.



©2016 West Corporation [11072016]. All rights reserved. May not be reproduced without expressed written permission.

## Hot Lunch

**HOT LUNCH ARE \$6**

Monday – Kita

Wednesday – Subway

Thursday – Mat's Pizza

LUNCH CARDS ARE AVAILABLE FOR PURCHASE ON SCHOOLCASH FOR \$60 FOR 10 LUNCHES.

Dec 13. was the last day that the First Baptist Church provided free lunches for the community for the remainder of 2022. They have not provided a start-up date for the new year. Please stay tuned!

## Nomad Athletics

*Good Luck to our Jr. Basketball Teams that are participating in a tournament in High Level.*





# 2022-2023 PEACE RIVER HIGH SCHOOL YEAR CALENDAR

25,26 & 29 –Divisional/Site Based PD/Operational Day  
30- First day for students

| AUGUST '22 |    |    |    |    |    |    |
|------------|----|----|----|----|----|----|
| S          | M  | T  | W  | Th | F  | S  |
|            | 1  | 2  | 3  | 4  | 5  | 6  |
| 7          | 8  | 9  | 10 | 11 | 12 | 13 |
| 14         | 15 | 16 | 17 | 18 | 19 | 20 |
| 21         | 22 | 23 | 24 | 25 | 26 | 27 |
| 28         | 29 | 30 | 31 |    |    |    |

| SEPTEMBER '22 |    |    |    |    |    |    |
|---------------|----|----|----|----|----|----|
| S             | M  | T  | W  | Th | F  | S  |
|               |    |    |    | 1  | 2  | 3  |
| 4             | 5  | 6  | 7  | 8  | 9  | 10 |
| 11            | 12 | 13 | 14 | 15 | 16 | 17 |
| 18            | 19 | 20 | 21 | 22 | 23 | 24 |
| 25            | 26 | 27 | 28 | 29 | 30 |    |

5-Labour Day, no school  
13-School Pictures – 9 A.M.  
23-Division PD-based In-Service Day  
30- Truth & Reconciliation Day, no school

7- Non-operational day  
10-Thanksgiving Day, no school  
13 – Super Thursday  
18 – Super Tuesday  
24- PD day  
26-PTI by Appointment

| OCTOBER '22 |    |    |    |    |    |    |
|-------------|----|----|----|----|----|----|
| S           | M  | T  | W  | Th | F  | S  |
|             |    |    |    |    |    | 1  |
| 2           | 3  | 4  | 5  | 6  | 7  | 8  |
| 9           | 10 | 11 | 12 | 13 | 14 | 15 |
| 16          | 17 | 18 | 19 | 20 | 21 | 22 |
| 23          | 24 | 25 | 26 | 27 | 28 | 29 |
| 30          | 31 |    |    |    |    |    |

| NOVEMBER '22 |    |    |    |    |    |    |
|--------------|----|----|----|----|----|----|
| S            | M  | T  | W  | Th | F  | S  |
|              |    | 1  | 2  | 3  | 4  | 5  |
| 6            | 7  | 8  | 9  | 10 | 11 | 12 |
| 13           | 14 | 15 | 16 | 17 | 18 | 19 |
| 20           | 21 | 22 | 23 | 24 | 25 | 26 |
| 27           | 28 | 29 | 30 |    |    |    |

11-Remembrance Day-No School  
18-Report Cards  
22/24 – Super week  
23 – PTI by appointment  
25- PD Day, ATA PD Day

13/15 – Super week  
23-31 – Christmas Break

| DECEMBER '22 |    |    |    |    |    |    |
|--------------|----|----|----|----|----|----|
| S            | M  | T  | W  | Th | F  | S  |
|              |    |    |    | 1  | 2  | 3  |
| 4            | 5  | 6  | 7  | 8  | 9  | 10 |
| 11           | 12 | 13 | 14 | 15 | 16 | 17 |
| 18           | 19 | 20 | 21 | 22 | 23 | 24 |
| 25           | 26 | 27 | 28 | 29 | 30 | 31 |

| JANUARY '23 |    |    |    |    |    |    |
|-------------|----|----|----|----|----|----|
| S           | M  | T  | W  | Th | F  | S  |
| 1           | 2  | 3  | 4  | 5  | 6  | 7  |
| 8           | 9  | 10 | 11 | 12 | 13 | 14 |
| 15          | 16 | 17 | 18 | 19 | 20 | 21 |
| 22          | 23 | 24 | 25 | 26 | 27 | 28 |
| 29          | 30 | 31 |    |    |    |    |

1-8 Christmas Break  
12-27 - Diploma Exams  
17/19 – Super week  
20 – Last day of classes  
23-26 – Exam Week  
27 – Report Cards  
30 – PD Day  
31- Semester 2 Starts

10 – PD Day  
17 - Non-Operational Day  
20- Family Day, no school  
23 – Super Thursday  
28 – Super Tuesday

| FEBRUARY '23 |    |    |    |    |    |    |
|--------------|----|----|----|----|----|----|
| S            | M  | T  | W  | Th | F  | S  |
|              |    |    | 1  | 2  | 3  | 4  |
| 5            | 6  | 7  | 8  | 9  | 10 | 11 |
| 12           | 13 | 14 | 15 | 16 | 17 | 18 |
| 19           | 20 | 21 | 22 | 23 | 24 | 25 |
| 26           | 27 | 28 |    |    |    |    |

| MARCH '23 |    |    |    |    |    |    |
|-----------|----|----|----|----|----|----|
| S         | M  | T  | W  | Th | F  | S  |
|           |    |    | 1  | 2  | 3  | 4  |
| 5         | 6  | 7  | 8  | 9  | 10 | 11 |
| 12        | 13 | 14 | 15 | 16 | 17 | 18 |
| 19        | 20 | 21 | 22 | 23 | 24 | 25 |
| 26        | 27 | 28 | 29 | 30 | 31 |    |

9 & 10 - Teachers Convention  
14/16 - Superweek  
24 – PD Day  
29 – PTI by appointment

7 – 16 -Easter Break  
21 – Report Cards  
26 – PTI by appointment

| APRIL '23 |    |    |    |    |    |    |
|-----------|----|----|----|----|----|----|
| S         | M  | T  | W  | Th | F  | S  |
|           |    |    |    |    |    | 1  |
| 2         | 3  | 4  | 5  | 6  | 7  | 8  |
| 9         | 10 | 11 | 12 | 13 | 14 | 15 |
| 16        | 17 | 18 | 19 | 20 | 21 | 22 |
| 23        | 24 | 25 | 26 | 27 | 28 | 29 |
| 30        |    |    |    |    |    |    |

| MAY '23 |    |    |    |    |    |    |
|---------|----|----|----|----|----|----|
| S       | M  | T  | W  | Th | F  | S  |
|         | 1  | 2  | 3  | 4  | 5  | 6  |
| 7       | 8  | 9  | 10 | 11 | 12 | 13 |
| 14      | 15 | 16 | 17 | 18 | 19 | 20 |
| 21      | 22 | 23 | 24 | 25 | 26 | 27 |
| 28      | 29 | 30 | 31 |    |    |    |

12 – PD Day  
22 – Victoria Day, no school  
23/25 - Superweek

13/15 – Superweek  
16 – Last day of classes  
19 – 23 Exam week  
12 – 26 – Diploma Exams  
27 – Report Cards  
28 – Last Operational Day

| JUNE '23 |    |    |    |    |    |    |
|----------|----|----|----|----|----|----|
| S        | M  | T  | W  | Th | F  | S  |
|          |    |    |    | 1  | 2  | 3  |
| 4        | 5  | 6  | 7  | 8  | 9  | 10 |
| 11       | 12 | 13 | 14 | 15 | 16 | 17 |
| 18       | 19 | 20 | 21 | 22 | 23 | 24 |
| 25       | 26 | 27 | 28 | 29 | 30 |    |

| JULY '23 |    |    |    |    |    |    |
|----------|----|----|----|----|----|----|
| S        | M  | T  | W  | Th | F  | S  |
|          |    |    |    |    |    | 1  |
| 2        | 3  | 4  | 5  | 6  | 7  | 8  |
| 9        | 10 | 11 | 12 | 13 | 14 | 15 |
| 16       | 17 | 18 | 19 | 20 | 21 | 22 |
| 23       | 24 | 25 | 26 | 27 | 28 | 29 |
| 30       | 31 |    |    |    |    |    |

1-Canada Day

# SUPERINTENDENT'S MESSAGE: PARENT SURVEYS

Peace River School Division  
Success for All

Peace River  
Learning Together



Parents, please be on the lookout for a letter from the Alberta Government. Inside the letter, you will find a survey from the government that asks questions about our School Division. The surveys generally come to parents of Grade 4, 7, and 10 students, but have been known to come to parents of other grades as well. This survey is important to our school division, and we value your honest feedback. The more people we have completing these surveys, the more accurate representation we can receive.

The survey can be confusing and often the questions seem like they are not directed at your child's grade level. Answering with "I don't know" is problematic, as this response gives the School Division a negative result on the survey. If you have any questions, please reach out to your school's principal for assistance. They would be more than happy to help because they care about your child(ren) and the quality of education that they are receiving.

These survey results are important. PRSD values your feedback, as we endeavor to continually improve our services for our students. By completing these surveys, you will be helping us be the first choice for students.

Thank you in advance for taking the time to fill out the surveys and for returning them to the government on our behalf. Your support, along with our hardworking staff members, has allowed us to continue operations throughout a difficult school year.

| How satisfied or dissatisfied are you?                                       | Very Satisfied          | Satisfied               | Dissatisfied            | Very Dissatisfied       | Don't Know              | N/A                     |
|--|-------------------------|-------------------------|-------------------------|-------------------------|-------------------------|-------------------------|
| 2. With the quality of education your child is receiving at school?          | <input type="radio"/> 1 | <input type="radio"/> 2 | <input type="radio"/> 3 | <input type="radio"/> 4 | <input type="radio"/> 5 | <input type="radio"/> 6 |
| 3. With the quality of teaching at your child's school?                      | <input type="radio"/> 1 | <input type="radio"/> 2 | <input type="radio"/> 3 | <input type="radio"/> 4 | <input type="radio"/> 5 | <input type="radio"/> 6 |
| To what extent do you agree or disagree that:                                | Strongly Agree          | Agree                   | Disagree                | Strongly Disagree       | Don't Know              | N/A                     |
| 4. Your child finds school work interesting?                                 | <input type="radio"/> 1 | <input type="radio"/> 2 | <input type="radio"/> 3 | <input type="radio"/> 4 | <input type="radio"/> 5 | <input type="radio"/> 6 |
| 5. Your child finds school work challenging?                                 | <input type="radio"/> 1 | <input type="radio"/> 2 | <input type="radio"/> 3 | <input type="radio"/> 4 | <input type="radio"/> 5 | <input type="radio"/> 6 |
| 6. Your child clearly understands what they are expected to learn at school? | <input type="radio"/> 1 | <input type="radio"/> 2 | <input type="radio"/> 3 | <input type="radio"/> 4 | <input type="radio"/> 5 | <input type="radio"/> 6 |
| 7. Your child is learning what they need to know                             | <input type="radio"/> 1 | <input type="radio"/> 2 | <input type="radio"/> 3 | <input type="radio"/> 4 | <input type="radio"/> 5 | <input type="radio"/> 6 |

I would also like to take this time to highlight our achievements and showcase some of the great things we've been implementing within the Division this school year:

- We've committed to ongoing student assessments and creating individual academic profiles for each student. To enhance this, our Learning Services team partnered with school staff to administer Early Years Assessments over 30 days covering classes in seven schools throughout the Division.
- We have continued to prioritize safety for our students and staff in classrooms, as well as online. New procedures and technological safety measures have been implemented to ensure everyone in the Division feels safe.
- Emotional supports are readily available to students to create a safe learning environment in classrooms and schools. Students and staff have access to Social Workers, YES Workers, Project PEACE team members and many other divisional supports.
- Parental involvement has steadily increased, especially in regard to School Councils and the Council of School Council meetings. Professional development with the Alberta School Council Association has assisted us in creating more opportunities for parents to work more closely with the Division and their schools.

All schools are making sure that their students' physical, social, and emotional wellness needs are met so that their overall academic engagement is increased.

We are looking forward to a successful year ahead and we thank you in advance for completing the survey.

Sincerely,

*Adam Murray,*  
Superintendent of Schools



**Peace River School Division**  
Learning Together - Success for All